



REAL
ESTATE



9 Millbank, Westminster, London SW1P 3AN

Overlooking the quiet and leafy Dean Bradley Street, this 4th floor apartment with conveniently designed layout benefits from west facing aspect, spacious terrace and a designated secure parking space.

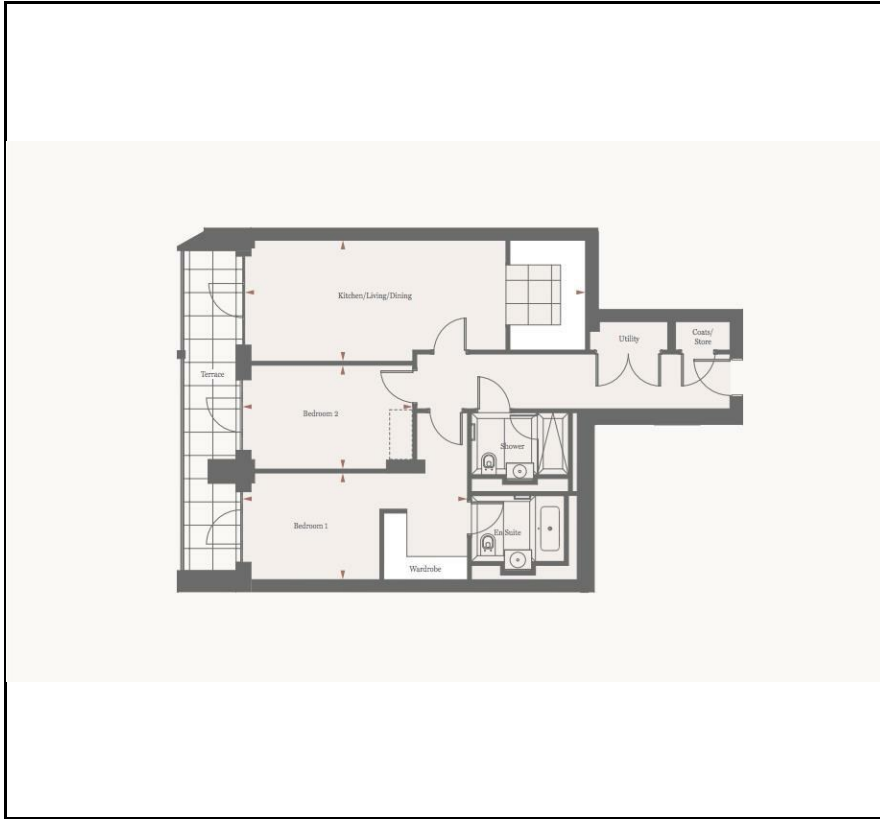
Exclusively designed by contemporary interior designer Goddard Littlefair, 9 Millbank provides world-class facilities – the state-of-the-art gym, swimming pool, SPA, treatment rooms, private cinema screening room, several meeting rooms, underground parking and 24hour concierge services.

Located on the riverbank of the Thames, steps away from the iconic

Price £2,050,000

- 24h Concierge
- Gym, swimming pool
- 906 sq ft (84 sq m)
- Underground Parking Space
- Terrace
- SPA
- Cinema

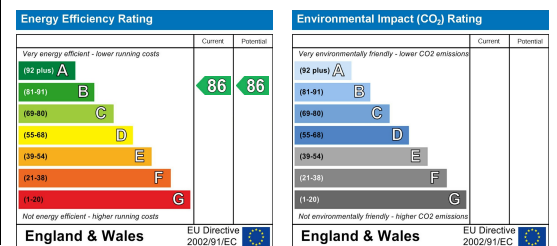
Floor Plan



Area Map



Energy Efficiency Graph



Viewing

Please contact our AZ Real Estate Office on 0203 871 4074 if you wish to arrange a viewing appointment for this property or require further information.

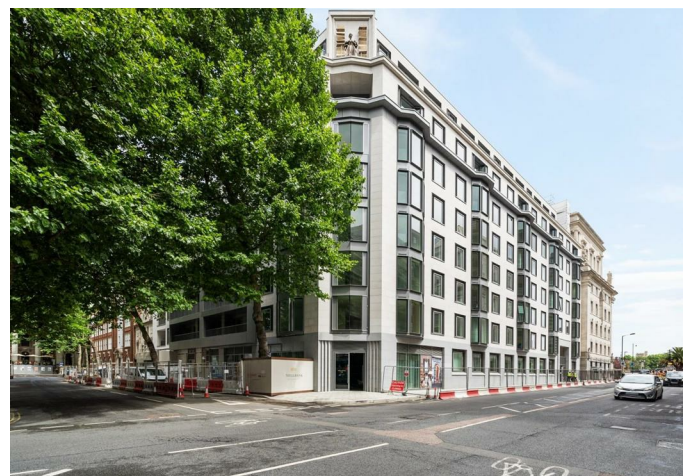
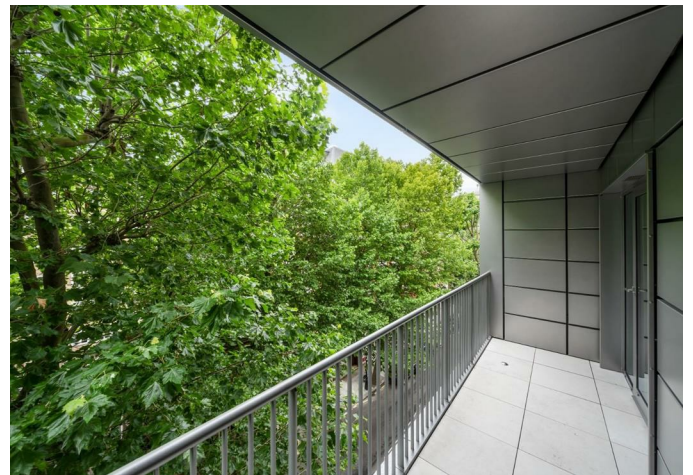
Houses of Parliament, headquarters of Burberry, art gallery Tate Britain, the development provides easy access to the best sights and amenities London has to offer. Westminster, St James Park, Victoria stations could be reached by foot while Heathrow Airport is within 30 minutes drive.

Tenure – Leasehold

Length of lease (years remaining) – 999 years from 2022 (997 years remaining)

Annual service charge amount – £9,500

EPC rating: B



These particulars, whilst believed to be accurate are set out as a general outline only for guidance and do not constitute any part of an offer or contract. Intending purchasers should not rely on them as statements of representation of fact, but must satisfy themselves by inspection or otherwise as to their accuracy. No person in this firm's employment has the authority to make or give any representation or warranty in respect of the property.

7 Marylebone Lane, London, W1U 1DB

T: 0203 871 4074 | welcome@azrealestate.eu